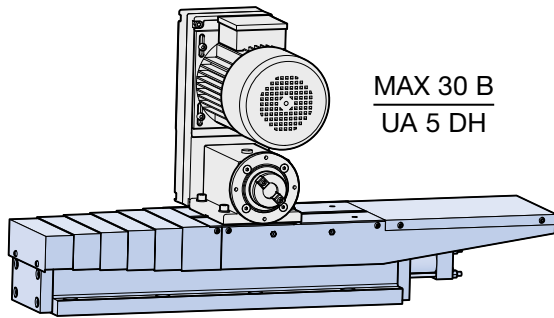
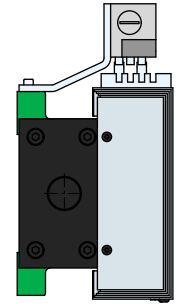
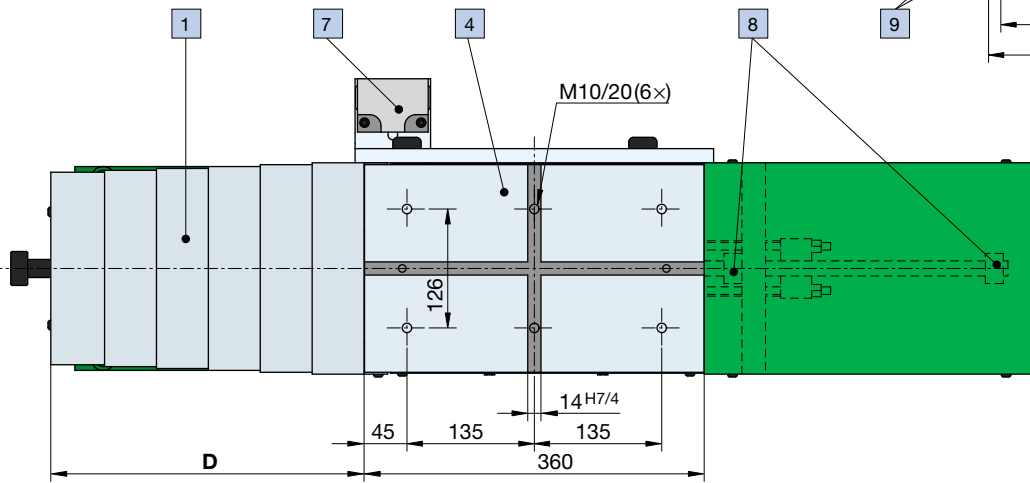
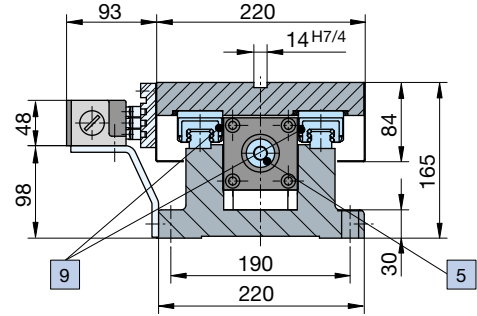
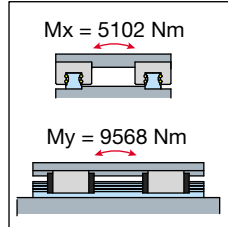
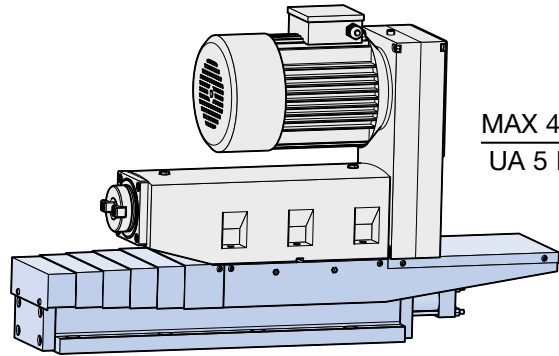


Stroke		
	250	400
A	8	10
B	3×190	4×190
C	290	440
D	350	530
E	767	967
	UA 5 DH-12	UA 5 DH-41



MAX 30 B  
UA 5 DH



MAX 45 B  
UA 5 DH

- Slide units type **UA 5** are high-performance, heavy-duty feed components: **UA 5 DH**, hydraulic version, and **UA 5 DNL**, servomotor version, section 5. Two stroke executions: 250 and 400 mm.
- Movement using 4 preloaded ball slides.
- **UA 5 DH** slide positioning monitored by 3-contact cam rail switch box, mounted on the right or on the left. Front and rear mechanical stops.
- A suitable machining unit for the **UA 5** slide is a **MAX 45 B**, which is illustrated in section 3, and **MAX 30 B** for 90° adaptation.
- **Option:** additional stop in front of the unit, pos. 10.
- **Order reference.**  
**UA 5 DH 21:** hydraulic slide unit, stroke 250.  
**UA 5 DH 41:** hydraulic slide unit, stroke 400.

Technical Data	
Total stroke	250 / 400 mm
Hydraulic cylinder	Ø 63, rod Ø 28 mm
Thrust pushing at 40 bar	12 500 N
Thrust pulling at 40 bar	10 000 N
Feed rate	max. 10 m/min
Max. pressure	64 bar
Flow rate at max. feed rate	31 l/min
Hydraulic connection forward	G 1/4" rear
Hydraulic connection return	G 1/4" rear
Color	RAL 6018
Weight (stroke 250)	110 kg
Weight (stroke 400)	130 kg

Features	
1	Telescopic way cover, steel 20/10
2	Slide base made of hardened steel casting
3	Grease nipples located on both sides
4	Slide in steel, for unit adaptation
5	Integrated hydraulic cylinder
6	Protection cover
7	Slide positioning monitored by 4-contact cam rail switch box, mounted on the left or right
8	Front and rear position mechanical stops
9	4 double ball bearing carriages
10	Option: stop in front of the unit
11	Hydraulic return port